

Landscape Scale Sustainability: *Ecological, Social, and Economic Aspects*

Kristie Maczko, Ph.D.

John A. Tanaka, Ph.D.

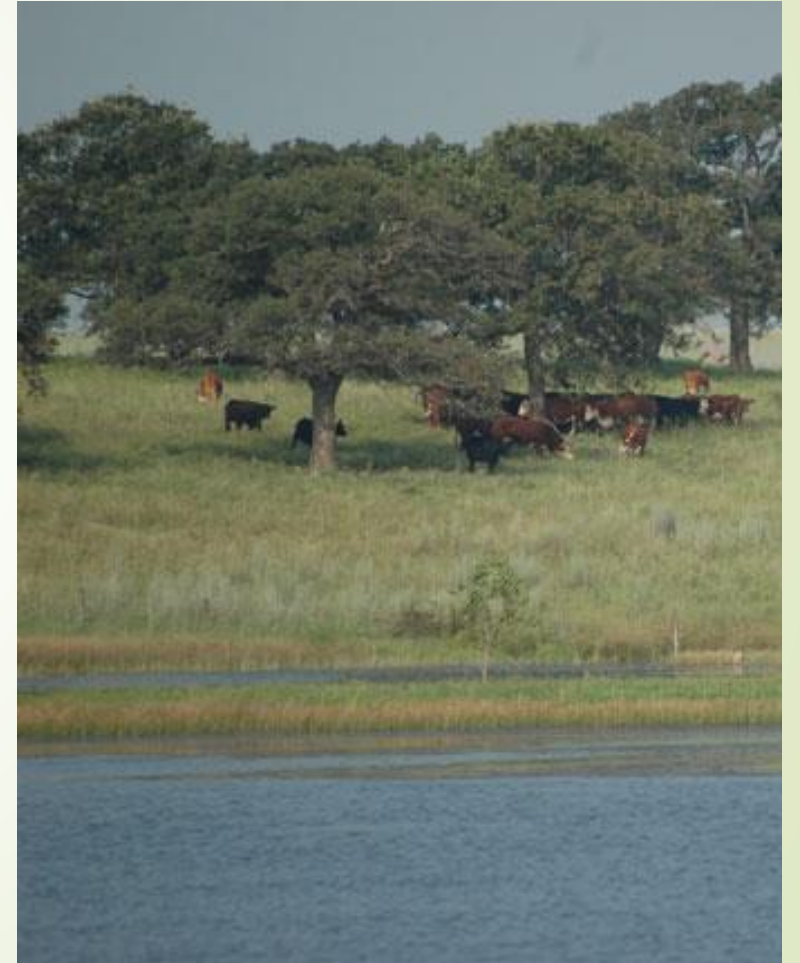
Sustainable Rangelands
Roundtable

<http://sustainableangelands.org>



Sustainable Rangelands Roundtable

- ▶ Partnership process with a 17 year history
- ▶ Over 100 participants from more than 50 organizations
- ▶ Federal, tribal, state, and local agencies, landowners, land managers, universities, professional organizations and others
- ▶ Projects, meetings, and workshops, conducted across the country

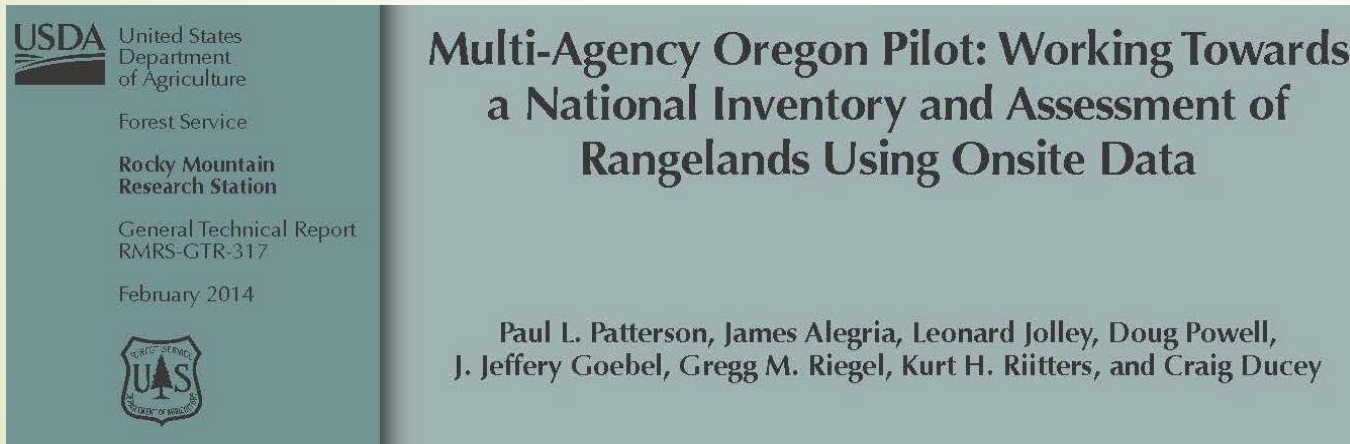


SRR Timeline and Projects

- 2003 - 1st Approximation Report: Criteria & Indicators for Sustainable Rangelands
- 2007 - Ranch Sustainability Assessment Guidebook and Workshops
- 2008 – Rangeland Ecosystem Services Primer
- 2009 – Social, Ecological, & Economic Conceptual Framework
- 2010 – Climate change assessment and adaptation
- 2010 – **Oregon Multi-Agency Pilot Project (MAPP)**
- 2011 – Rangelands contributions to food security
- 2012 - Ecosystem impacts of energy development on rangelands
- 2013 – **Social and economic survey of public lands ranchers**
- 2014 – Future Directions of Usable Science for Sustainable Rangelands Workshop
- 2015 – Modeling Economics Benefits of Soil Health on Rangelands
- 2015 – Motivations and Socio-Economics of Conservation Program Participants
- 2016 – **Is what's good for the bird also good for the herd? Economics of Sage Grouse Mgmt.**

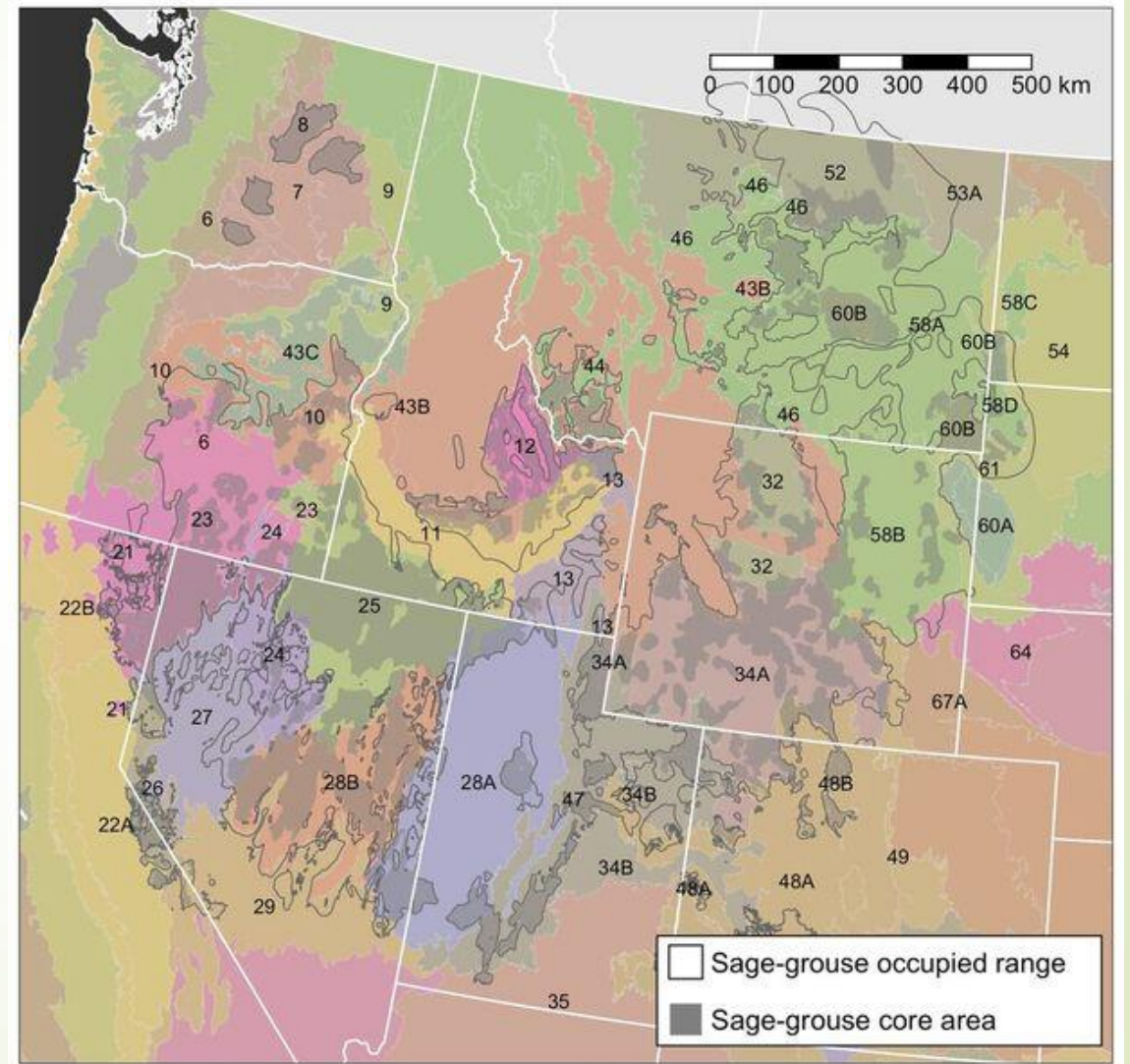
Oregon Multi-Agency Pilot Project

- ▶ Can agencies incorporate rangeland indicators into existing inventories (FIA and NRI) for joint analyses?
- ▶ 30 million acres, 13 counties in Central Oregon; ecological and socio-economic data
- ▶ GTR-317: Multi-Agency Oregon Pilot: Working Towards a National Inventory and Assessment of Rangelands Using Onsite Data



Economics of sage-grouse conservation practices at the ranch level

- Investigate 9 MLRA's in sage-grouse core area
- Includes: 23, 28B, 32, 34A, 25, 58A, 10, 12, 52



Rural Communities - Socio-Economic/EGS Surveys

National:

- Population 19,735
- Sample size 1,911
- Need 582 completed
- 710 returned; 37.2%

State (Wyoming):

- Population 2,319
- Sample size 1,462
- Need 476 completed
- 695 returned; 47.5%

+/-4% margin of error at 95%

Regional:

Ecological Region	Total Permittees	Sample Size
Colorado Plateau (AZ, NM, UT)	1,698	628
Central Rockies (CO, ID, WY)	4,059	704
Desert SW (AZ, NM, NV, TX)	2,281	658
Great Basin (ID, NV, UT)	1,233	588

- Population 9,271
- Sample size 2,578
- Need 1,289 completed
- 645 returned; 25%

+/-7% margin of error at 95%